

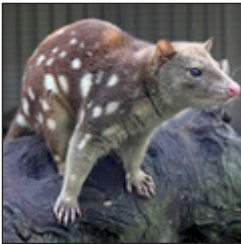
MARSUPIAL MATCH UP

CUT OUT THE DESCRIPTIONS AND THE PICTURES BELOW. MATCH UP THE CORRECT MARSUPIAL WITH ITS DESCRIPTION. ANSWERS ON PAGE 15 BUT DON'T PEEK!



Antechinus

They usually eat insects, flowers and nectar.



Numbat

Their tongues are half the length of their bodies and the only thing they eat are termites.



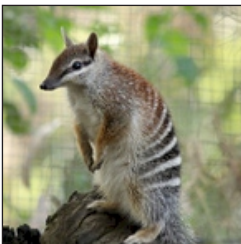
Bandicoot

They have large feet like kangaroos and hop on their hind legs.



Wombat

Their pouch faces backwards so dirt doesn't get inside when they burrow.



Spotted Quoll

The largest surviving meat-eating marsupial on mainland Australia.

ANIMALS

AUSTRALIA HAS SOME OF THE MOST UNUSUAL NATIVE ANIMALS IN THE WORLD. ALMOST ALL MARSUPIALS ARE FOUND IN AUSTRALIA. A MARSUPIAL HAS A POUCH WHERE THEIR TINY BABIES DEVELOP.



GLUE THE CORRECT DESCRIPTION THE BACK OF THE PICTURE. USE TO MAKE SWAPS.



Aboriginal Kangaroo Painting

The kangaroo is probably Australia's most well-known marsupial. A newborn will stay in its mother's pouch for four months. When frightened, a young kangaroo will even hop back into the pouch for protection. The Aboriginals often paint kangaroos and other animals. For thousands of years, these artists have used a basic set of symbols, such as dots, concentric circles and curved and straight lines.